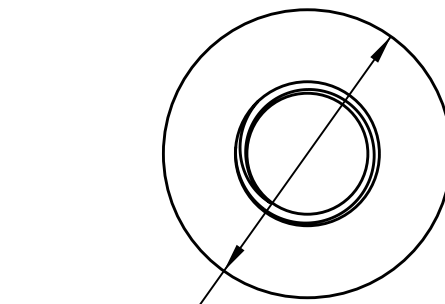


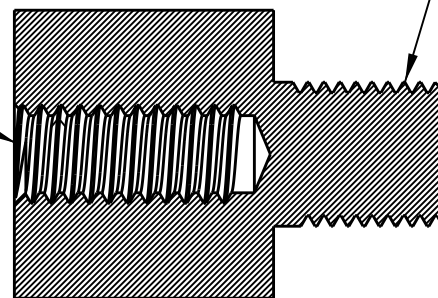
NO UNDERCUT
PERMITTED



$\varnothing .750$

1/4-20 UNC-2B,
.563 MIN DEEP
FULL THREAD

3/8-24 UNF-2A, .375
MIN LONG FULL THREAD



SECTION A-A

.675 .450

1023 MOUNTING STUD
MAT'L: CRS OR BRASS
FINISH: TBD
REVISION: P1
SCALE: 2=1 APPROX ("A" SIZE")
APRIL 16, 2006