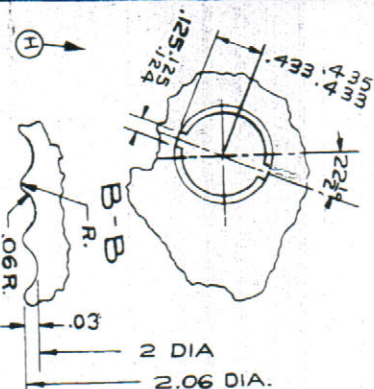


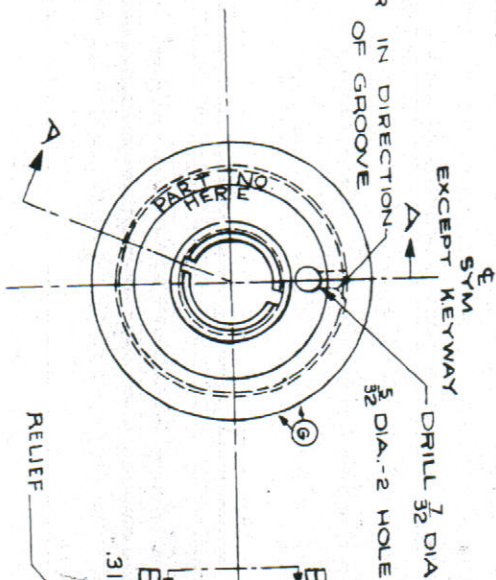
WEIGHT- LBS.

14
8118

RELIEVE .16 R IN DIRECTION
OF ROTATION OF GROOVE
2 PLACES



ENLARGED
VIEW
OF GROOVES

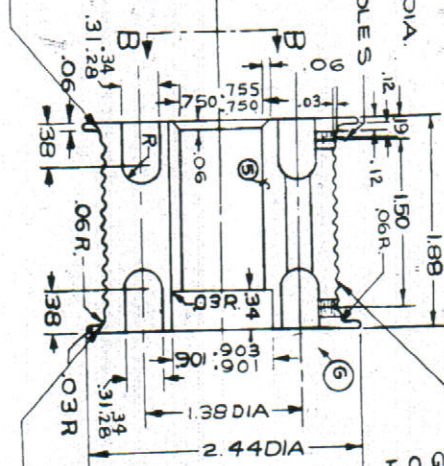


EXCEPT KEYWAY
SYM

DRILL 3/2 DIA.
5/2 DIA-2 HOLES

RELIEF

A-A



8 GROOVES PER
INCH R.H. START
GROOVE AT 5
HOLE DO NOT
PAINT

RELIEF

NEED
224-1351
224-1351
1015-16511

24ST SHAPE SPEC. QQ-A-354
INTERCHANGEABILITY REQUIRED
DO NOT PAINT CENTER HOLE OR KEYWAY
EXCEPT AS NOTED

3-11889	B-17 F	ALL	42	51-118	2	B F 3-15
3-11889	B-17E	ALL		51-118	2	B F 3-15
PART	MODEL	BOEING DOUGLAS LACA	AIR	USED ON	QTY	FINISH
NUMBER	SERIAL	NUMBER	DWG. NO.	AIRP	SPEC.	

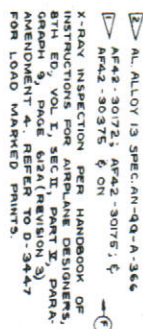
NAME OF PART	SIZE	MATERIAL	M.T.
DRUM			
CONTROL			
3-11889			

MASTER TRACING

2008

MALE 1 GA FROM T351-7576511
2024 OR

City, PAULI

[illegible]

BOEING AIRCRAFT COMPANY, SEATTLE, WASH.