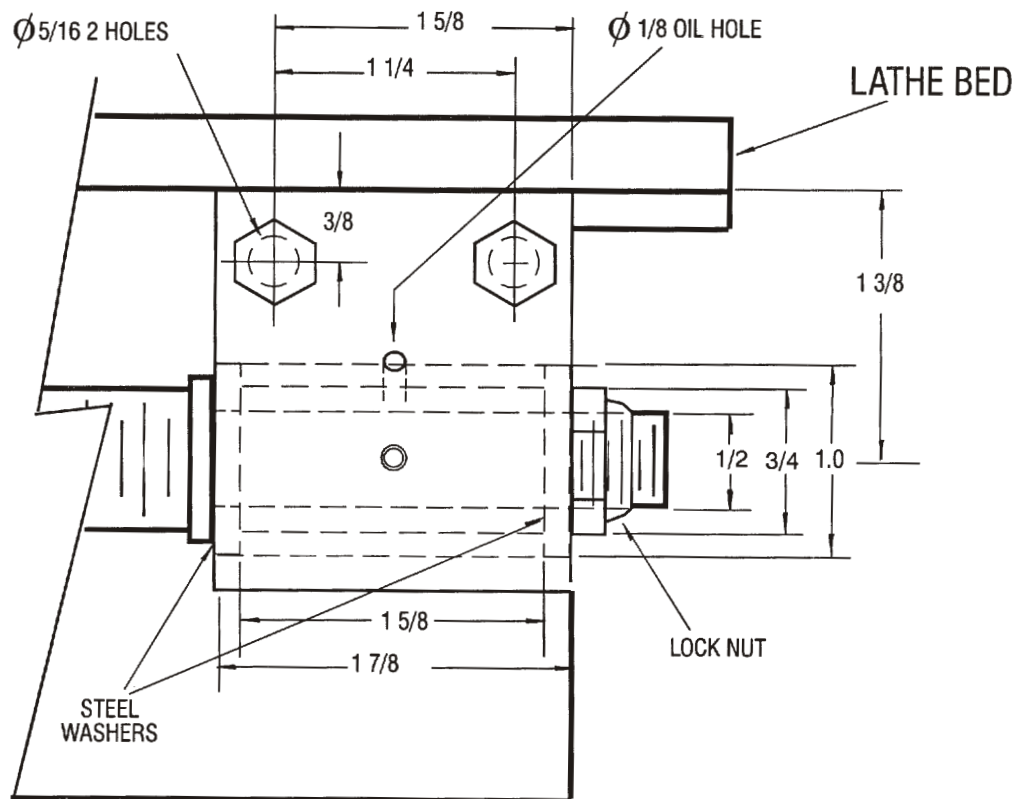
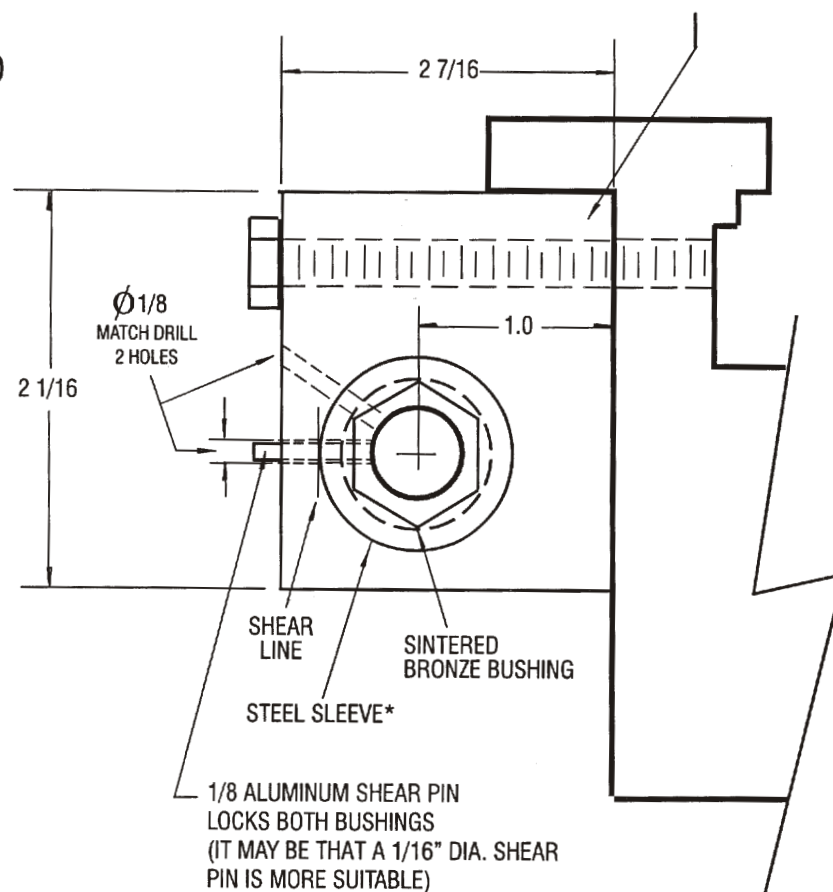


LEADSCSREW BRACKET **Mild Steel**



FRONT VIEW



SIDE VIEW

*An alternative would be to use only the sintered bronze bushing, 1 inch dia. with 1/2" bore. However, the steel sleeve provides a sharp cutting edge to shear pin. If only bronze is used the shear pin hole may become elongated after repeated shears and a shear might not even occur- just a bind

Leadscrew Bracket for Atlas Lathe TH54 10F

SCALE: 1 = 1

DATE: May 28

BY: E.H.Kerr