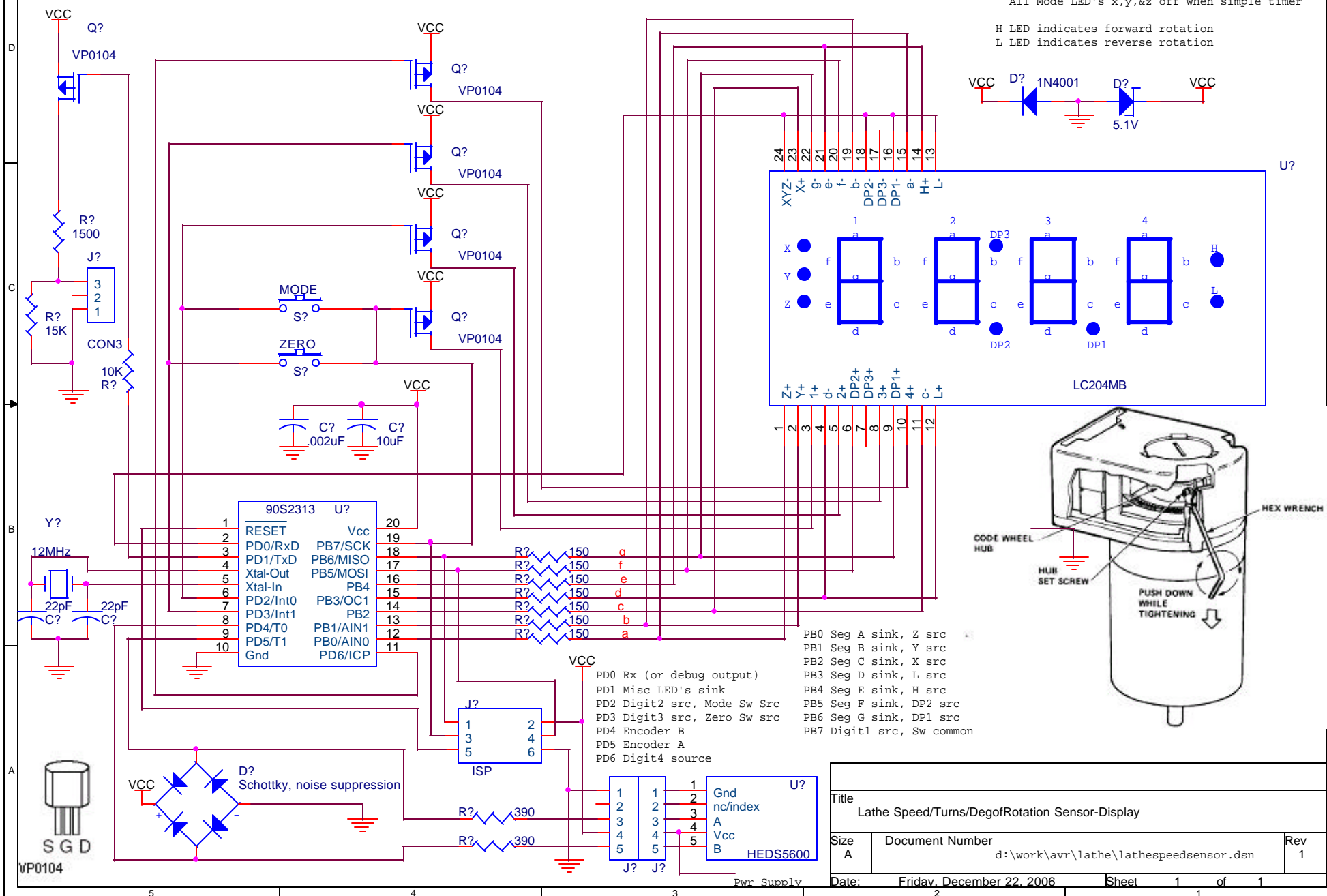


Modes :

```
(x) RPM: 00.00 to 1240
(y) Turns: 00.00 to 9999
(z) Degrees: 00.01 to 360.0
All Mode LED's x,y,&z off when simple timer
```

```
H LED indicates forward rotation
L LED indicates reverse rotation
```



Title Lathe Speed/Turns/DegofRotation Sensor-Display			
Size A	Document Number d:\work\avr\lathe\lathespeedsensor.dsn		Rev 1
Date:	Friday, December 22, 2006	Sheet	1 of 1